

*Product Data Sheet*

*Wireless Monitoring and Alarm Systems*

## System Overview

The Britannia Wireless monitoring system is an essential product for the protection of vital products. Whether it's temperature, humidity, CO2, O2, mains off, power consumption, PH, conductivity or any other inputs, this system does it all.



Using long range telemetry offers a cost-effective system without forfeiting reliability or security, and if signals are weakened in any way, boosters can be fitted to ensure distance is no object.

All readings transmitted are fully encrypted, eliminating false or incorrect readings. A very reliable, secure and easy to use monitoring and alarm system.

This allows any type of sensor requirement to be connected.

The system can provide both text messages and a voice auto dialler message upon alarm if required.

## Receiver (Logger) Features

- Data Logger with integral receiver
- Alert options:
  - Local audio and visual alerts
  - GSM (Text message alerts)
  - Auto Dialler (pre-recorded audio messages)
- Connectivity options:
  - Moxa (communicate over the LAN)
- Mute audio alarm feature
- 24-hour+ built-in battery back up
- 247K readings expandable to 2M readings
- Display and keypad
- Up to 250 channels
- Up to 125 transmitters
- UHF Frequency – 434.225MHz (Europe and countries where applicable)

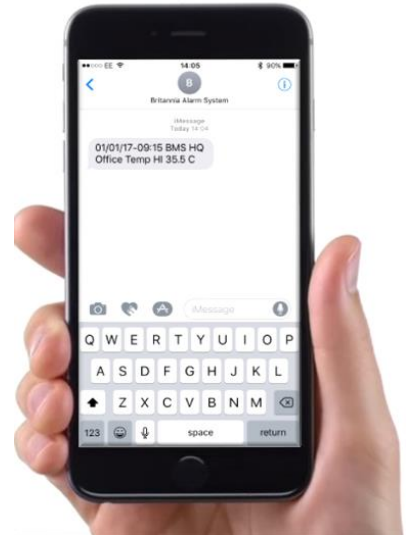
## Transmitters / Boosters Features

- Variety of transmitters are available that can monitor any measurement required.
- LCD Displays
- Sensors can be Integral, external or a combination of both
- Up to 8 physical inputs
- Battery operated allow units to be portable
- Compact size and lightweight
- Unobtrusive rugged aluminium case
- Transmission range 1 sec to 4 hours



## GSM Unit (Text Message Alerts)

- 2G/3G
- Up to 20 telephone numbers
- Detailed Alarm SMS messages including specific channel,
- SMS Grouping - Channels can also be configured to specific telephone numbers
- Multiple Network compatibility – *requires a SIM card*
- Status message can be requested via text
- Alarms, No data, status, low transmitter battery level and mains supply interruption text alerts available



## MOXA Unit (Ethernet to Serial Adaptor)

- System Communicated over the LAN
- PC connections from multiple computers over the LAN

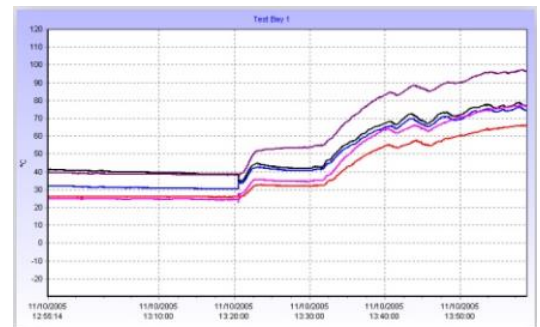
## Auto dialler (Pre-recorded Audio Alerts)

- Send a pre-recorded message when in alarm
- Up to 10 telephone numbers
- Independent of the mobile network – *require an analogue BT phone line.*
- Can be configured to send a pre-set text message in poor or no network environments

## Software

### Darca Plus - Basic

- User Friendly configure all settings such as alarm thresholds, logging, Text message telephone number (*Requires additional hardware*)
- Allows data download and analysis
- Exportable to popular spreadsheets
- Real time metering
- Real time graphing
- Graphing features such as zooming, custom axis, statistics including threshold
- Insert comments at points of interest on the graph
- Transmitter low battery warning



### Darca Heritage – Enhanced

- Day to Day operation and settings separated for even simpler user interaction
- Automated Data collection and analysis
- Exportable to popular spreadsheets
- Real time metering
- Data stored in a central repository, so all historic data is easily accessible
- Channels can be configured to individual, zoning/group graph structure
- Graphing features such as zooming, custom axis, statistics including threshold
- Insert comments at points of interest on the graph
- Multi-user system with varying levels of user access



## Transmitters

Models	Sensors	Range	Resolution	Accuracy
GD24	4 x external T or K type thermocouple temperature / state	-200 to 200 °C	0.1 °C / 0.2 °C	±0.3°C
GD34	4 x external thermistor temperature / state inputs	-50 to 150°C	0.2°C (-40 to +125°C)	±0.4°C (-40 to +125°C)
GD06	built-in thermistor temperature	-40 to +70°C	0.1 °C 0.2 °C 0.3 °C 0.4 °C	±0.2°C (-15 to +40°C) ±0.4°C (-29 to +65°C) ±0.6°C (-36 to +70°C) ±0.8°C (-40 to -36°C)
GD10	built-in temperature (digital sensor)	-30 to 65°C	0.1°C	±0.4°C (+5 to +40°C) ±1.0°C (-20 to +65°C) ±1.5°C (-30°C)
	external temperature (RHT10E)	-40 to +120°C	0.1°C	±0.4°C (+5 to +40°C) ±1.0°C (-20 to +80°C)
GD13E	external RH (RHT10E)	0-100%	0.1%	±2% (10 to 90%RH) ±4% (0 to 100%RH)
	external temperature (RHT10E)	-40 to +120°C	0.1°C	±0.4°C (+5 to +40°C) ±1.0°C (-20 to +80°C)
GS42	2 x external voltage or current	0-100mV		
GS44	4 x external voltage or current	0-1V DC 0-10V DC 0-20mA DC 4-20mA DC	0.25mV 2.5mV ~5uA 0.05%	±0.5mV ±5mV 20uA 0.1%
GC60	2 x state indications			
GD43E	1 x external RH and temperature (RHT10E) 1 x voltage / current 1 x external thermistor temperature	As GD13E As GS42 As GD34		
GD81	1 x built-in barometric pressure	800-1100mBar		
GD84	1 x built-in differential air pressure	-250 to +250 Pascal	0.1 Pasca	±3 Pascal

For a full list of transmitters or any requirements you need please contact Britannia.



# WolfLabs

**Pricing on any accessories shown can be found by keying the part number into the search box on our website.**

The specifications listed in this brochure are subject to change by the manufacturer and therefore cannot be guaranteed to be correct. If there are aspects of the specification that must be guaranteed, please provide these to our sales team so that details can be confirmed.

**[www.wolflabs.co.uk](http://www.wolflabs.co.uk)**

**Tel : 01759 301142**

**Fax : 01759 301143**

**[sales@wolflabs.co.uk](mailto:sales@wolflabs.co.uk)**

Please contact us if this literature doesn't answer all your questions.